

Dupre Road
8/28/13

MHOC AUGUST 2013 REPORT
SAO/ 8/28/13

MEMORANDUM

TO: Joint Legislative Mental Health Oversight Committee
FROM: Paul Dupre, Commissioner of the Department of Mental Health
DATE: August 28, 2013
RE: August 2013 DMH Report to the Mental Health Oversight Committee

Attached please find the August, 2013 report to the MHOC as outlined in 2013 Acts and Resolves No. 79. Additionally, information that the Department believes will be responsive to MHOC meeting data collection requests is incorporated.

1. The number of individuals receiving acute inpatient psychiatric care (Level 1, general involuntary) in all hospitals; and single combined one-day highest number (Level 1).
2. The number of individuals waiting for admission, including number of individuals treated in each setting and the single combined one-day highest number each month.
3. The total census capacity and average daily census of intensive recovery residence beds and the secure residential (MTCR) daily census; average length of stay for crisis beds across the state system of care.
4. DMH Monthly Snapshot, which includes Court Ordered Involuntary Medication numbers including time from application to orders.
5. Overall Projection for replacement/development of system bed capacity

Respectfully submitted by the Department of Mental Health. Please direct any inquiries for additional data collection or report content development to Susan Onderwyzer at susan.onderwyzer@state.vt.us

August, 2013
DMH Report to the Legislative Mental Health Oversight Committee

This monthly report focuses on providing updates to the Mental Health Oversight Committee on a number of identified performance indicators for the Department of Mental Health. The format of this report provides both per month, and year – to – date data, as available, as well as a narrative explanation of how the data is captured and some interpretation of its meaning in the context of our system of care.

1. **Acute Inpatient Psychiatric Care:** The data in this section outlines the number of individuals receiving acute inpatient psychiatric care (Level 1, general involuntary, general voluntary) in designated hospitals; and single combined one-day highest number for patients identified as Level 1. (The DMH does not track all voluntary utilization of inpatient psychiatric treatment, but this capacity is accounted for in the total system of available hospital beds.)

This data is captured through a daily DMH Utilization Review document that lists all Level 1 patients, providing for a single combined one-day highest number, and the hospital daily inpatient bed census graph, which depicts the number of individuals served in inpatient units in all hospitals. The Charts below detail utilization of inpatient beds for the time period.

- *Level I Stays by Inpatient Hospital report- July 2013*
- *Level I Admissions by Psychiatric Inpatient Unit – July 2013*
- *Designated Hospital Inpatient Capacity report- July 2013*
- *Level 1 inpatient care length of stay for current patients report-As of August 12, 2013*

There are 157 psychiatric beds in our statewide system of care for adults; Brattleboro Retreat – 75, Fletcher Allen – 27, Green Mountain Psychiatric Care Center – 8, Rutland Regional – 23, Windham Center – 10, and Central Vermont Medical Center – 14. The highest daily census of the beds designated as Level I was 40 in the month of July. This represents approximately 25% of the statewide system of adult beds. There were no Level 1 clients served at Windham Center or at Central Vermont Medical Center during the month of July.

The Level I admissions were dispersed across the system, with approximately 53% of the admissions being in designated Level I units. The Level I inpatient units were largely at their capacity for the month of July with no beds closed, as can be seen in the *Designated Hospital Inpatient Capacity Report for July, 2013*. Tyler 4 at Brattleboro Retreat was at 94% occupancy for the entire month, while South Wing at Rutland Regional and Green Mountain Psychiatric care Center were at 100% of capacity for July. It is interesting to note that the overall census of Level I patients increased slightly over the month. This is

MHOC AUGUST 2013 REPORT

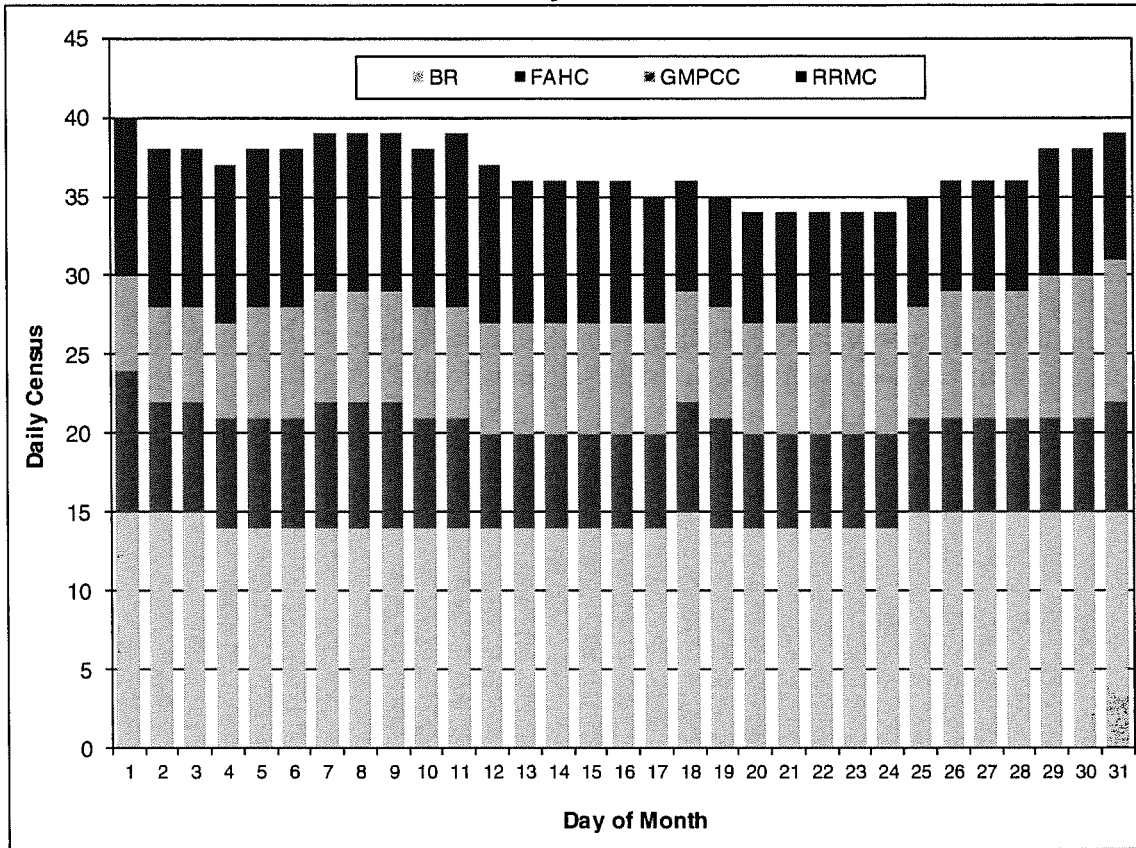
SAO/ 8/28/13

seen as an expected fluctuation. There were beds 'closed' during July ranging from a low of 0% to a high of 52% of the time during the month.

The length of stay data for 39 Level I patients still in inpatient care as of August 12, 2013 varies widely, which makes identification of an average stay difficult and potentially inaccurate as a measure. The median length of stay for this cohort is 73 days and represents the mid range for the group, with the mean of 81. The range is between 4 and 306, with a resulting average of 81 days.

Length of stay for discharged Level 1 patients averages 43 days with a median length of stay of 29 days. Length of stay is affected by variables including: responsiveness and compliance with recommended treatment; status of forensic factors, appropriate discharge plans and their availability, to name a few key factors.

Level 1 Stays by Inpatient Hospital July 2013



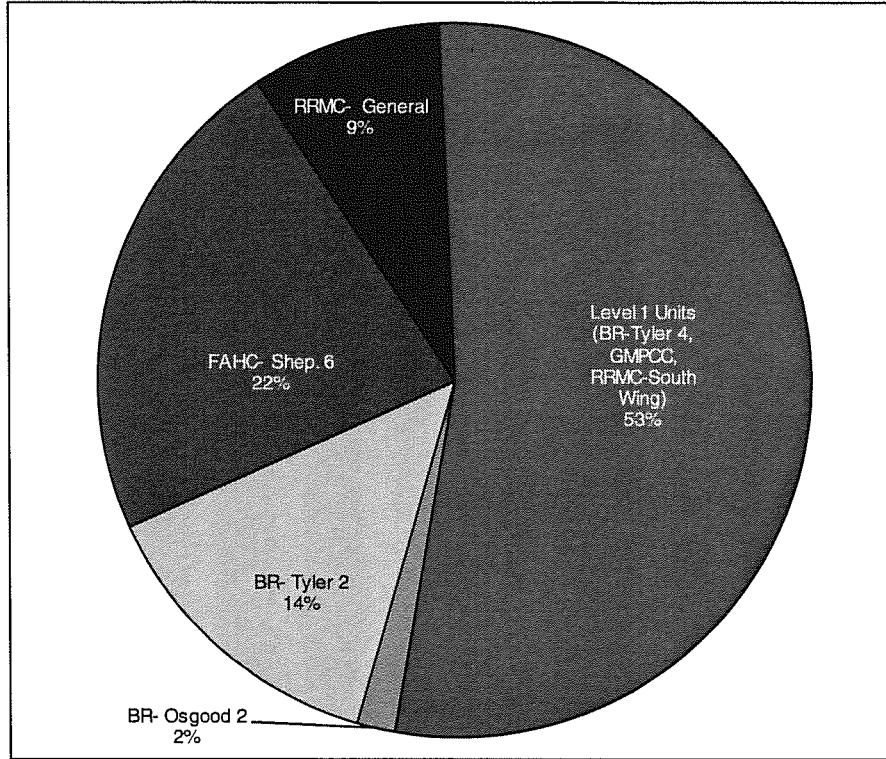
Level 1 Stays during July 2013

Hospital	Total Adult Beds	Total Stays	Highest Daily Census	Average Daily Census
Brattleboro Retreat	75	19	15	14
Fletcher Allen	27	13	9	7
Green Mountain	8	12	9	7
Rutland Regional	23	14	11	9
Statewide		58	40	37

Date of Report: August 12, 2013.

Analysis is based on the Inpatient Tracking Spreadsheet maintained by the Department of Vermont Health Access (DVHA). Includes psychiatric hospitalizations with Level 1 designations for hospitalizations occurring at the Brattleboro Retreat (BR), Fletcher Allen Medical Center (FAHC), Rutland Regional Medical Center (RRMC), and Green Mountain Psychiatric Care Center (GMPCC). Level 1 designation is reserved for patients with risk of imminent harm to self or others and requiring significant resources. Total stays reflects admissions and existing designated level 1 hospitalizations on unit during a specified month.

Level 1 Admissions by Psychiatric Inpatient Unit July 2013



Psychiatric Inpatient Unit	Total Stays
* BR- Osgood 2	1
* BR- Tyler 2	8
* FAHC- Shep. 6	13
* RRMC- General	5
BR- Tyler 4	10
RRMC- South Wing	9
GMPCC	12
Total	58

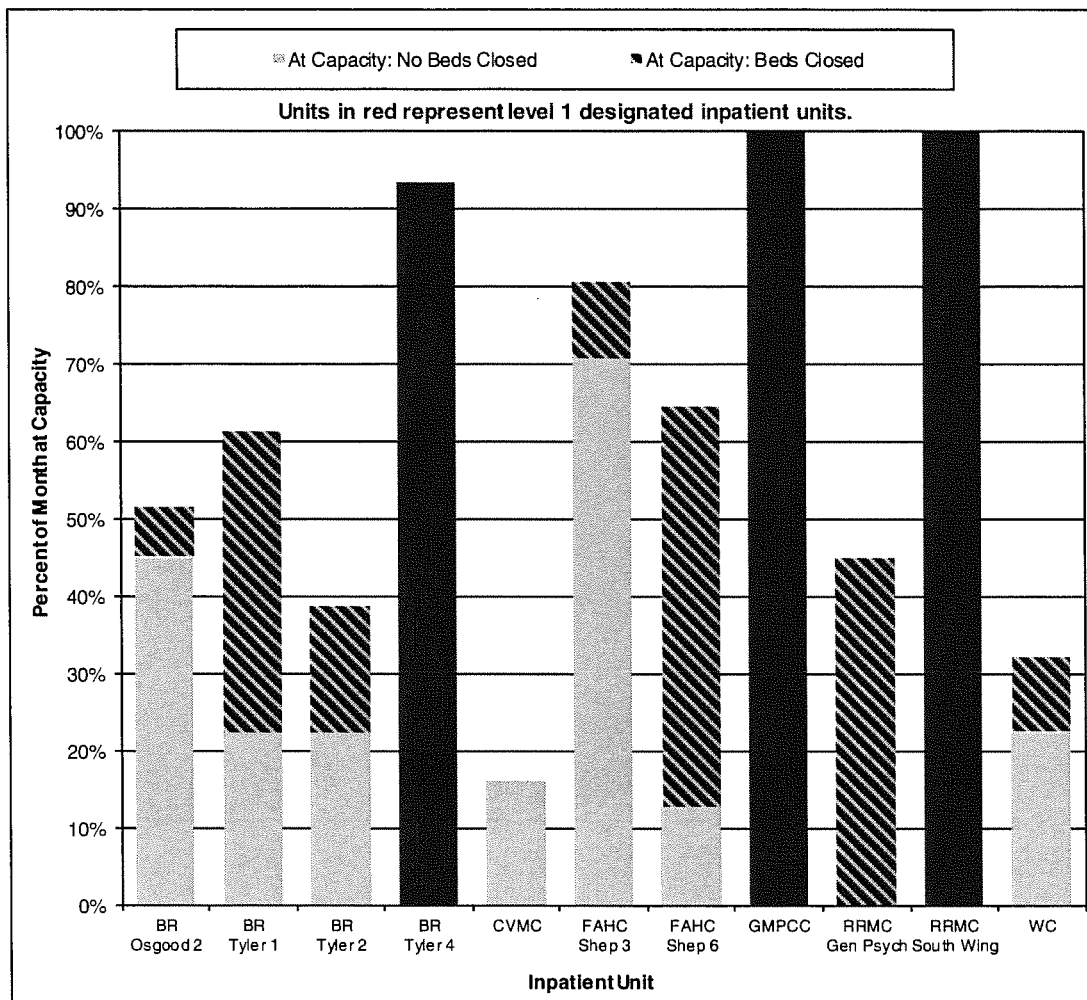
* Units specifically requested by MHOC.

**Episodes based upon the unit at admission to inpatient care.
 Patients can be transferred to other units within the hospital.**

Date of Report: August 12, 2013.

Analysis is based on the Inpatient Tracking Spreadsheet maintained by the Department of Vermont Health Access (DVHA). Includes psychiatric hospitalizations with Level 1 designations for hospitalizations occurring at the Brattleboro Retreat (BR), Fletcher Allen Medical Center (FAHC), Rutland Regional Medical Center (RRMC), and Green Mountain Psychiatric Care Center (GMPCC). Level 1 designation is reserved for patients with risk of imminent harm to self or others and requiring significant resources. Total stays reflects admissions and existing designated level 1 hospitalizations on unit during a specified month.

Designated Hospital Inpatient Capacity July 2013



Designated Hospital	Not At Capacity	Percent of Days in July		No Census Reported
		No Beds Closed	Beds Closed	
Brattleboro Retreat - Osgood 2	48%	45%	6%	0%
Brattleboro Retreat - Tyler 1	39%	23%	39%	0%
Brattleboro Retreat - Tyler 2	52%	23%	16%	10%
Brattleboro Retreat - Tyler 4	0%	94%	0%	6%
Center Vermont Medical Center	84%	16%	0%	0%
Fletcher Allen - Shepardson 3	16%	71%	10%	3%
Fletcher Allen - Shepardson 6	32%	13%	52%	3%
Green Mtn. Psychiatric Care Center	0%	100%	0%	0%
Rutland Regional - General Psych	55%	0%	45%	0%
Rutland Regional - South Wing*	0%	100%	0%	0%
Windham Center	58%	23%	10%	10%

Based on data reported to the Vermont Department of Mental Health (DMH) by designated hospitals (DH) for adult inpatient care using the electronic bed boards system. Beds at inpatient settings can be closed based on the clinical decision of the director of each inpatient unit.

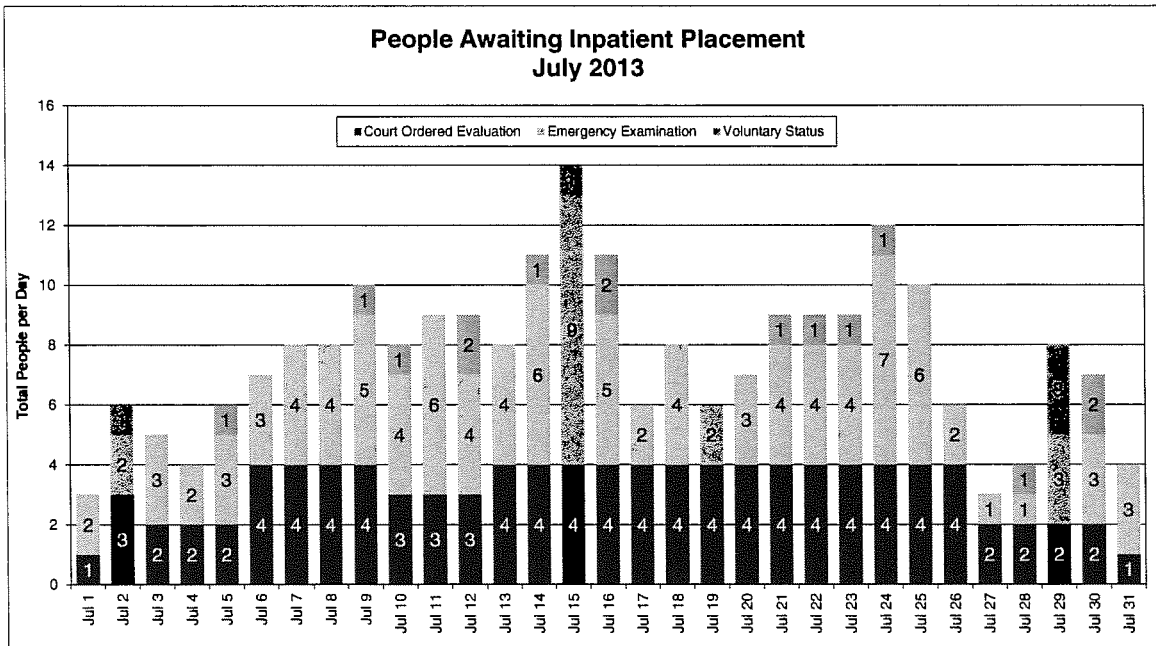
Level 1 Inpatient Care Length of Stay for Current Patients

Hospital	# Patients	Length of Stay in Days As of August 12, 2013			
		Minimum	Maximum	Mean	Median
BR	16	18	306	111	102
FAHC	7	4	152	50	36
GMPC	8	4	208	54	32
RRMC	8	5	142	77	79
Statewide	39	4	306	81	73

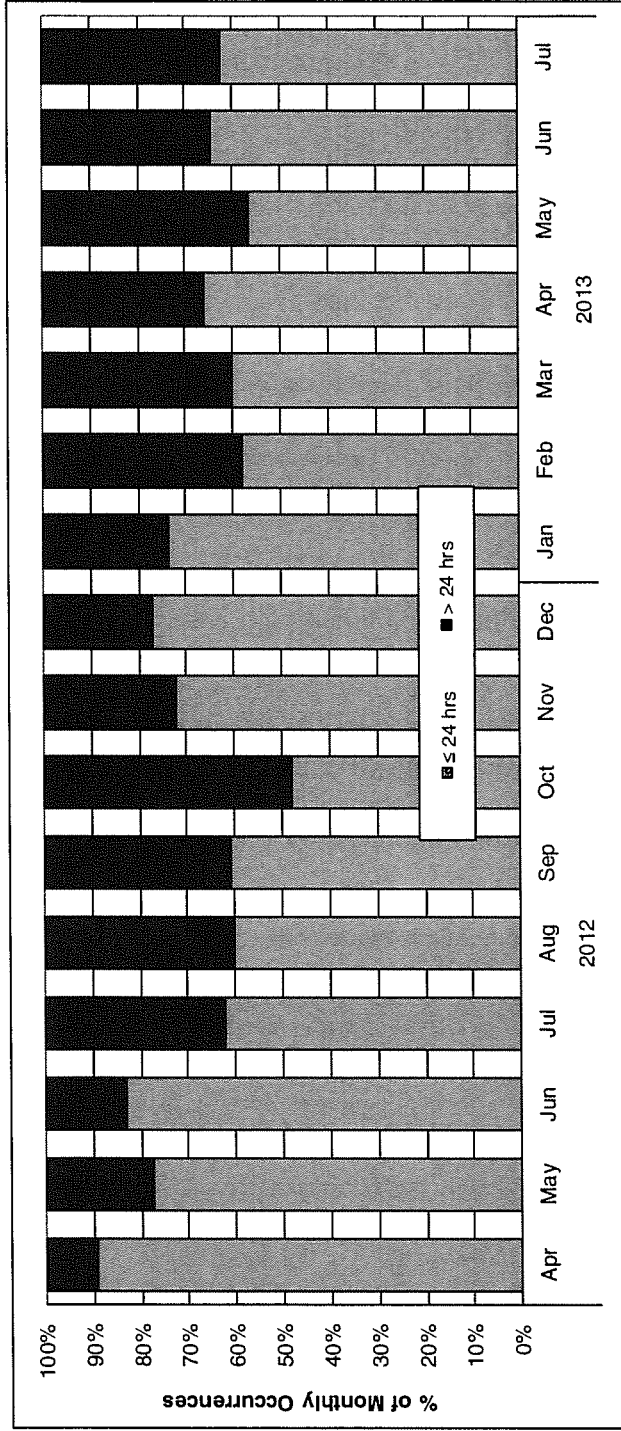
Analysis is based on the Inpatient Tracking Spreadsheet maintained by the Department of Vermont Health Access (DVHA). Includes psychiatric hospitalizations with Level 1 designations for hospitalizations occurring at the Brattleboro Retreat (BR), Fletcher Allen Medical Center (FAHC), Rutland Regional Medical Center (RRMC), and Green Mountain Psychiatric Care Center (GMPC). Level 1 designation is reserved for patients with risk of imminent harm to self or others and requiring significant resources. Length of Stay is calculated from admission to date of report for clients still in inpatient care.

2. The number of individuals waiting for admission, including number of individuals treated in each setting and the single combined one-day highest number each month.

As can be seen below in the following graphs, the number of patients waiting in emergency departments over 24 hours, between June 2012 and June 2013, has increased, although there is no clear pattern noted in the fluctuation. This data includes individuals who are waiting in DOC, all Emergency Exams and those people who are directly admitted to a psychiatric unit.



**Wait Times for Involuntary Inpatient Admission
April 2012 - July 2013**



Wait Time	2012												2013				
	Apr	May	Jun	Jul	Aug	Sep	Oct	Nov	Dec	Jan	Feb	Mar	Apr	May	Jun	Jul	
≤ 24 hrs	33	41	29	28	27	28	24	31	30	39	22	36	31	34	33	53	
> 24 hrs	4	12	6	17	18	18	26	12	9	14	16	24	16	26	18	32	
Total	37	53	35	45	45	46	50	43	39	53	38	60	47	60	51	85	
Wait Time in Days																	
Mean	0.5	0.6	0.5	0.7	0.9	1.2	1.7	1.0	0.7	0.7	1.3	1.4	2.0	2.4	1.3	2.5	
Median	0.2	0.1	0.1	0.3	0.3	0.4	1.0	0.2	0.1	0.5	0.6	0.8	0.5	0.8	0.4	0.7	

Analysis conducted by the Vermont Department of Mental Health Research & Statistics Unit.

Analysis based on data maintained by the GMFCC admissions department that is collected from paperwork submitted by crisis and designated agency/hospital screeners. Wait times are defined from determination of need to admission to disposition, less time for medical clearance, for persons on warrant for immediate examination (code 12), application for emergency exam (code 11), and court ordered observations (code 30).

Wait Times for Involuntary Inpatient Admission April 2012 - July 2013



Wait Time	2012												2013				
	Apr	May	Jun	Jul	Aug	Sep	Oct	Nov	Dec	Jan	Feb	Mar	Apr	May	Jun	Jul	
≤ 24 hrs	33	41	29	28	27	28	24	31	30	39	22	36	31	34	33	53	
> 24 hrs	4	12	6	17	18	18	26	12	9	14	16	24	16	26	18	32	
Total	37	53	35	45	45	46	50	43	39	53	38	60	47	60	51	85	

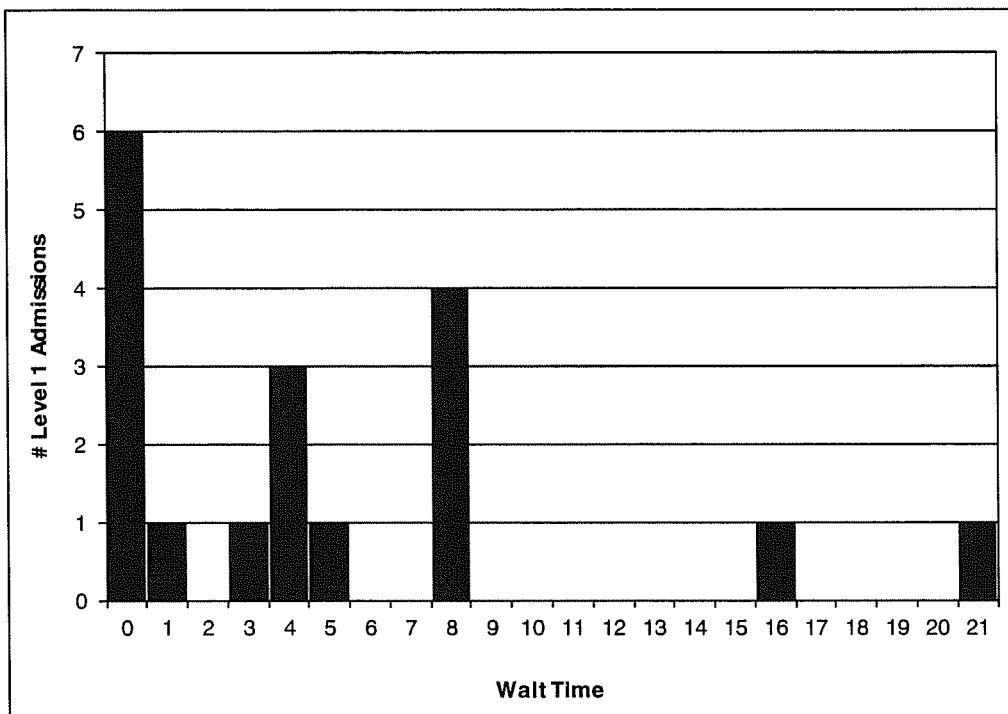
Wait Time in Days

Mean	0.5	0.6	0.5	0.7	0.9	1.2	1.7	1.0	0.7	0.7	1.3	1.4	2.0	2.4	1.4	2.7
Median	0.2	0.1	0.1	0.3	0.3	0.4	1.0	0.2	0.1	0.5	0.6	0.8	0.5	0.8	0.5	0.7

Analysis conducted by the Vermont Department of Mental Health Research & Statistics Unit.

Analysis based on data maintained by the GMFCC admissions department that is collected from paperwork submitted by crisis and designated agency/hospital screeners. Wait times are defined from determination of need to admission, less time for medical clearance for persons on warrant for immediate examination (code 12), application for emergency exam (code 11), and court ordered observations (code 30).

Wait Times for Level 1 Admissions July 2013



Wait Time	Level 1 Admissions	
	#	%
< 1 day	6	33%
1 day	1	6%
3 days	1	6%
4 days	3	17%
5 days	1	6%
8 days	4	22%
16 days	1	6%
21 days	1	6%
Total	18	100%

Date of Report: August 12, 2013.

Analysis is based on the Inpatient Tracking Spreadsheet maintained by the Department of Vermont Health Access (DVHA) and wait time reported to DMH/GMPCC Admissions Unit. Includes psychiatric hospitalizations with Level 1 designations for hospitalizations occurring at the Brattleboro Retreat (BR), Fletcher Allen Medical Center (FAMC), Rutland Regional Medical Center (RRMC), and Green Mountain Psychiatric Care Center (GMPCC). Level 1 designation is reserved for patients with risk of imminent harm to self or others and requiring significant resources.

MHOC AUGUST 2013 REPORT
SAO/ 8/28/13

3. The total census capacity and average daily census of intensive recovery residence beds, and secure residential daily census information
- DA Crisis Beds Census Report for July 2013 (not all data was available)

Crisis Bed/DA	Period of LOS	LOS time in days
CSAC Cottage Crisis	July, 2013	16
Alyssum	July, 2013	8
CMC Chris' Place	July, 2013	9
LCMH Oasis	July, 2013	2.75
NCSS Bayview	July, 2013	2.31
NKHS Care Bed	July, 2013	6.6
RMH CSID	July, 2013	22.17
WCMH Home Intervention	July, 2013	8.23
HCRS Alternatives	July, 2013	11

Census for Intensive Residential Recovery Units (July2013)

It is important to note that the monthly average is 34, without the addition of the Middlesex residence, as it did not go on line until the end of June, however it is anticipated that there will be a census of 6 by the 22nd of August, and likely 7 by the end of the month. There are currently 5 out of 7 beds occupied at the MTCR facility.

**Intensive Residential Recovery Census Report
BEDS OCCUPIED July 2013**

Intensive Residential - (Adults 18+)

	Hilltop	Meadowview	Middlesex	Second Spring	State Avg	State Avg Excluding Middlesex						
Total Beds	8	6	7	22	43	36						
	Census	Daily %	Census	Daily %	Census	Daily %	Census	Daily %	Census	Daily %	Census	Daily %
7/1/2013	7	88%	6	100%	2	29%	21	95%	36	84%	34	94%
7/2/2013	7	88%	6	100%	2	29%	21	95%	36	84%	34	94%
7/3/2013	7	88%	6	100%	2	29%	21	95%	36	84%	34	94%
7/4/2013	7	88%	6	100%	2	29%	21	95%	36	84%	34	94%
7/5/2013	7	88%	6	100%	2	29%	21	95%	36	84%	34	94%
7/6/2013	8	100%	6	100%	2	29%	21	95%	37	86%	35	97%
7/7/2013	8	100%	6	100%	2	29%	21	95%	37	86%	35	97%
7/8/2013	8	100%	6	100%	2	29%	21	95%	37	86%	35	97%
7/9/2013	8	100%	6	100%	2	29%	21	95%	37	86%	35	97%
7/10/2013	8	100%	6	100%	2	29%	22	100%	38	88%	36	100%
7/11/2013	8	100%	6	100%	3	43%	22	100%	39	91%	36	100%
7/12/2013	8	100%	6	100%	3	43%	22	100%	39	91%	36	100%
7/13/2013	8	100%	5	83%	3	43%	22	100%	38	88%	35	97%
7/14/2013	8	100%	5	83%	3	43%	22	100%	38	88%	35	97%
7/15/2013			5	83%	3	43%	22	100%	30	86%	27	96%
7/16/2013	8	100%	5	83%	3	43%	22	100%	38	88%	35	97%
7/17/2013	8	100%	5	83%	3	43%	22	100%	38	88%	35	97%
7/18/2013	8	100%	5	83%	3	43%	22	100%	38	88%	35	97%
7/19/2013	8	100%	5	83%	3	43%	22	100%	38	88%	35	97%
7/20/2013	8	100%	5	83%	3	43%	22	100%	38	88%	35	97%
7/21/2013	8	100%	5	83%	3	43%	22	100%	38	88%	35	97%
7/22/2013	8	100%	5	83%	3	43%	22	100%	38	88%	35	97%
7/23/2013	8	100%	5	83%	3	43%	22	100%	38	88%	35	97%
7/24/2013	8	100%	5	83%	3	43%	22	100%	38	88%	35	97%
7/25/2013	8	100%	5	83%	3	43%	22	100%	38	88%	35	97%
7/26/2013	8	100%	5	83%	3	43%	22	100%	38	88%	35	97%
7/27/2013	8	100%	5	83%	3	43%	22	100%	38	88%	35	97%
7/28/2013	8	100%	5	83%	3	43%	22	100%	38	88%	35	97%
7/29/2013	8	100%	6	100%	3	43%	22	100%	39	91%	36	100%
7/30/2013	8	100%	6	100%	3	43%	22	100%	39	91%	36	100%
7/31/2013	8	100%	4	67%	4	57%	22	100%	38	88%	34	94%
Monthly Avg.	7.83		5.42		2.71		21.71		37.42		34.71	
Monthly % Occupancy	97.9%		90.3%		38.7%		98.7%		87.0%		96.4%	

Based on data reported to the Vermont Department of Mental Health (DMH) by intensive recovery residence beds for adult care using the electronic bed boards system. Programs are expected to report to electronic bed boards a minimum of once per day to update their residential census.

Clients Receiving Crisis Bed Services (Service Code G02)

**Clients Receiving Crisis Bed Services
FY2013**

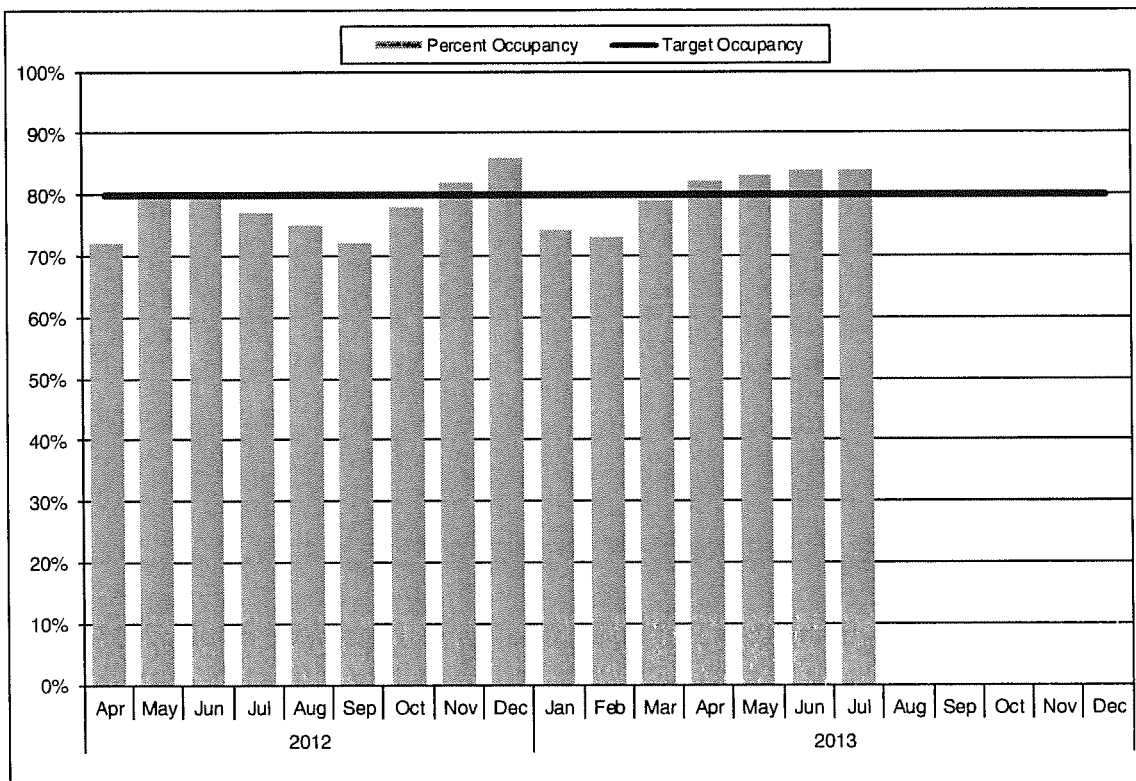
Designated Agency	Clients with Crisis Bed Services	
	#	% Total
HC	441	49%
NCSS	116	13%
UCS	82	9%
WCMH	70	8%
HCRS	60	7%
NKHS	48	5%
LCC	38	4%
RMHS	25	3%
CSAC	17	2%
CMC	9	1%
Total	906	100%

Disposition of patients discharged from psychiatric hospital treatment in July, 2013

There were 51 individuals discharged from hospitals in July, 2013. Forty-one percent of these were designated Level I by the DMH. The types of placements varied between approximately 60% returning to the previous placement/residence, to 25% being placed in a lower level of care within the system of community residential programs.

<u>DA</u>	<u># discharged</u>	<u>Type of placement</u>
LCMHS	Invol: 2	1 - Oasis House; 1 - Previous Residence
CSAC	Level I: 1	1-Intensive Residential Recovery
CMC	Invol: 1	1-Previous Residence
HC	Level I: 9 Invol : 12	13 - Previous Residence; 4 - Crisis Beds; 1 - DOC 3 - Pathways
HCRS	Level I: 3 Invol: 3	1 - Intensive residential recovery; 1 - MTCR 4 - Previous Residence
NCSS	Invol: 2	2 - Previous Residence
NKHS	Invol: 2	1-Care Bed; 1-Previous Residence
RMHS	Level I:3 Invol: 4	5 - Previous Residence; 1 - Maple Leaf Farm; 1- Crisis Bed
UCS	Level I:2 Invol: 1	1-Pathways; 1-DOC; 1-Previous Residence
WCMH	Level I :3 Invol: 3	4 - Previous Residence ; 1 - Home Intervention; 1 - Intensive residential recovery
Total	51	

Adult Crisis Beds at Designated Agencies Percent Occupancy by Month



Adult Crisis Beds: Percent Occupancy												
Year	Jan	Feb	Mar	Apr	May	Jun	Jul	Aug	Sep	Oct	Nov	Dec
2012	-	-	-	72%	80%	80%	77%	75%	72%	78%	82%	86%
2013	74%	73%	79%	82%	83%	84%	84%					

Analysis based on reported census to e-bed boards for emergency services beds intended to provide crisis intervention, respite, or hospital diversion that are staffed by and under the supervision of a designated community mental health agency (DA). Prior to May 2013, census is measured from the average census reported per day for each crisis bed unit. After May 2013, census is measured from the highest census reported per day for each crisis bed unit.

The Department of Mental Health expects crisis beds to be at 80% capacity with the expectation that crisis bed services can divert clients from inpatient stays.

- The DMH Monthly Snapshot is below. There was a request to provide a benchmark measure for comparison, where available, for the monthly snapshot measures. This is a work in progress and will be available on the August release of the snapshot, which will include data for the month of July.



Vermont Department of Mental Health
System Snapshot (August 14, 2013)

*data forthcoming

2013

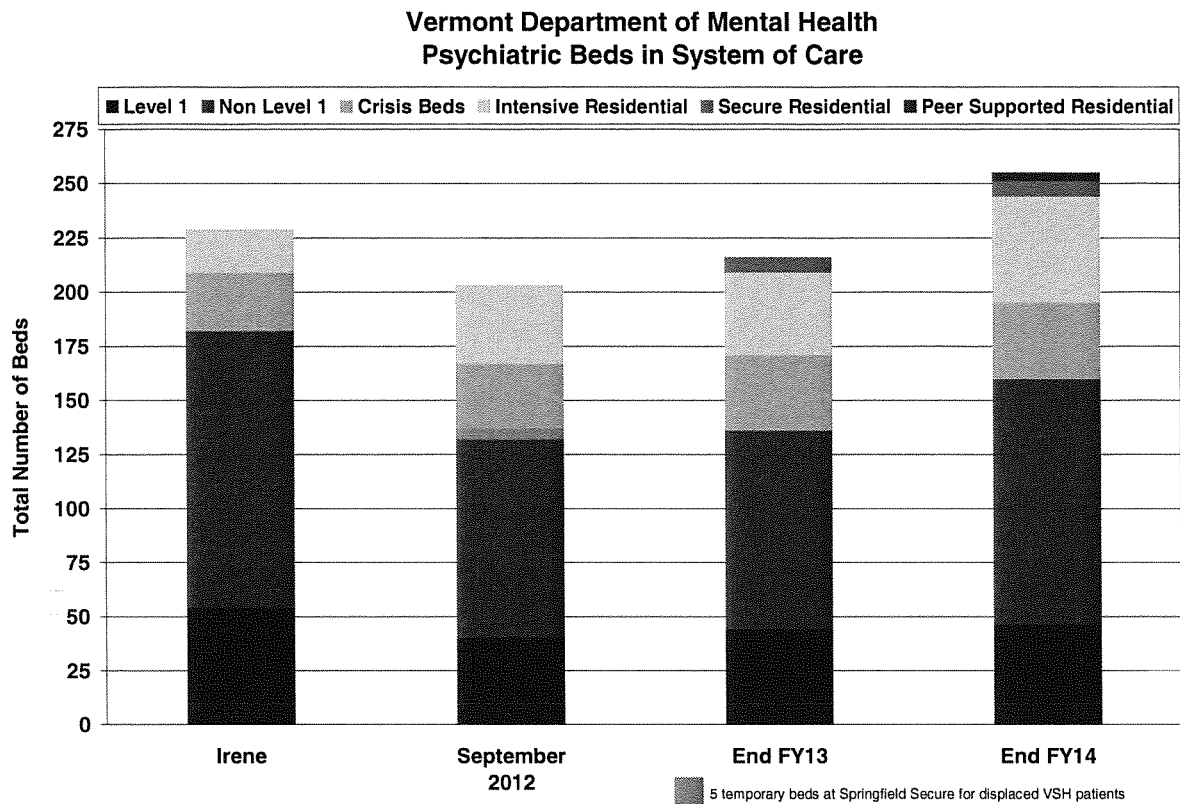
Reporting Category	FY13 Q3			FY13 Q4			FY14 Q1			FY14 Q2		
	Jan	Feb	Mar	Apr	May	Jun	Jul	Aug	Sep	Oct	Nov	Dec
Adult Inpatient Hospital												
% Occupancy	94%	91%	92%	84%	87%	93%	86%					
Avg. Daily Census	137	132	136	134	135	146	135					
% Occupancy at No Refusal Units							100%					
Avg. Daily Census							28					
Adult Crisis Beds												
% Occupancy	74%	73%	79%	82%	83%	84%	84%					
Avg. Daily Census	28	28	29	29	31	31	31					
Applications for												
Involuntary Hospitalizations (EE)												
Children	-	-	-	9	10	6	9					
Adults	50	32	55	41	55	39	65					
Total adults admitted with CRT	13	13	27	19	14	11	15					
Designation (% of Total applications)	26%	41%	49%	46%	25%	28%	23%					
Total Level 1 Admissions	19	10	20	18	22	10	18					
Instances when Placement Unavailable & Adult Client Held in ED												
	27	21	43	27	38	24	38					
Adult Involuntary Medications												
# Applications	2	3	3	2	9	4	5					
# Granted Orders	2	3	2	2	5	3	2					
Mean time to decision (days)	22	12	20	27	19	17	12					
Adult Forensic Screenings												
# Requested	11	13	9	10	11	11	22					
# Inpatient Ordered	3	7	5	5	6	6	11					
VT Resident Suicides												
Youth (0-17)												
Total	0	0	0	0	0	2	*					
# with DA contact within previous year	-	-	-	-	-	1	*					
Adults (18+)												
Total	4	6	10	8	9	2	*					
# with DA contact within previous year	0	3	2	2	1	0	*					
Housing												
# Clients permanently housed as a result of new Act79 housing funding	18	21	14	11	14	5	0					
Total # enrolled to date	98	119	133	144	158	169	169					
Involuntary Transportation												
Adults (total transports)												
# of Transports	19	17	18	11	18	13	*					
% Non-Secure	58%	94%	61%	82%	78%	85%	*					
% Secure	42%	6%	39%	18%	22%	15%	*					
% all transports using metal restraints	16%	6%	6%	9%	6%	8%	*					
% all transports using soft restraints	26%	0%	33%	9%	17%	8%	*					
Children Under 10 (total transports)												
# of Transports	3	3	0	0	0	0	*					
% Non-Secure	100%	100%	-	-	-	-	*					
% Secure	0%	0%	-	-	-	-	*					
% all transports using metal restraints	0%	0%	-	-	-	-	*					
% all transports using soft restraints	0%	0%	-	-	-	-	*					
CRT Employment												
% Employed		15%			available							
Wages per employed client		\$2,318			October 2013							



Vermont Department of Mental Health
System Snapshot (August 14, 2013)

Reporting Category	2012 (PRIOR YEAR)											
	FY12 Q3			FY12 Q4			FY13 Q1			FY13 Q2		
	Jan	Feb	Mar	Apr	May	Jun	Jul	Aug	Sep	Oct	Nov	Dec
Adult Inpatient Hospital												
% Occupancy	-	-	-	89%	92%	90%	89%	89%	91%	91%	88%	89%
Avg. Daily Census	-	-	-	-	-	-	-	-	-	-	-	-
Adult Crisis Beds												
% Occupancy	-	-	-	72%	80%	80%	77%	75%	72%	78%	82%	86%
Avg. Daily Census	-	-	-	-	-	-	-	-	-	-	-	-
Applications for Involuntary Hospitalizations (EE)												
Children	-	-	-	-	-	-	-	-	-	-	-	-
Adults	-	-	-	28	45	32	43	40	43	44	39	32
Total adults admitted with Level 1	-	-	-	-	-	-	13	11	10	17	11	13
Designation (% of Total applications)	-	-	-	-	-	-	30%	28%	23%	39%	28%	41%
Total adults admitted with CRT	-	-	-	7	15	18	18	11	24	22	14	11
Designation (% of Total applications)	-	-	-	25%	33%	56%	42%	28%	56%	50%	36%	34%
Instances when Placement Unavailable & Client Held in ED												
Involuntary Medications												
# Applications	4	3	7	3	6	4	4	3	4	6	0	2
# Granted Orders	3	2	5	2	1	3	4	2	1	6	-	2
Mean time to decision (days)	20	16	19	15	22	20	11	15	14	13	-	11
Forensic Screenings												
# Requested	-	-	-	-	-	-	17	19	11	8	8	14
# Inpatient Ordered	-	-	-	-	-	-	4	6	4	5	8	9
VT Resident Suicides												
Youth (0-17)												
Total	0	0	0	0	0	0	0	1	1	0	0	0
# with DA contact within previous year	0	0	0	0	0	0	0	0	0	0	0	0
Adults (18+)												
Total	7	6	11	8	9	7	6	4	7	4	3	9
# with DA contact within previous year	2	1	2	3	1	2	2	1	1	1	0	3
Housing												
# Clients permanently housed as a result of new Act79 housing funding	-	-	-	5	10	6	18	20	13	8	0	-
Involuntary Transportation												
Adults (total transports)												
# of Transports	24	14	19	11	23	15	14	13	17	8	15	15
% Non-Secure	33%	36%	11%	27%	22%	47%	57%	46%	35%	38%	67%	47%
% Secure	67%	57%	89%	73%	74%	40%	43%	54%	65%	63%	33%	53%
% Metal	46%	50%	63%	73%	48%	20%	21%	31%	35%	13%	20%	27%
% Soft	21%	7%	26%	0%	26%	20%	21%	23%	29%	50%	13%	27%
Children Under 10 (total transports)												
# of Transports	-	-	-	-	-	-	5	1	0	2	1	1
% Non-Secure	-	-	-	-	-	-	80%	100%	-	100%	0%	100%
% Secure	-	-	-	-	-	-	20%	0%	-	0%	100%	0%
% Metal	-	-	-	-	-	-	0	0	0	0	1	0
% Soft	-	-	-	-	-	-	1	0	0	0	0	0
CRT Employment												
% Employed	14%			15%			15%			16%		
Wages per employed client	\$2,308			\$2,363			\$2,379			\$2,486		

6. Overall Projection for replacement/development of system bed capacity



Respectfully submitted by the Department of Mental Health. Please direct any inquiries for additional data collection or report content development to Susan Onderwyzer at susan.underwyzer@state.vt.us

